



[www.samea.org.za](http://www.samea.org.za)

south african monitoring and evaluation association

## GROWING EVALUATION—EVALUATING GROWTH

SAMEA was formed in 2005 after a year of stakeholder consultation. The aim was to establish an organisation to promote quality Monitoring and Evaluation that would contribute to the country's development. SAMEA would do this by building a community of practice, committed to sound ethical and professional principles.

From its foundation to date significant progress has been made. The organisation is 'on the map'. It has engaged with government M&E processes, attracted a lot of interest and has taken its mission out into many arenas where M&E is being considered. SAMEA is a fully functional entity, with a credible and competent Board, 350 paid up members, and is fully compliant with legislation. Significant progress has been made in building a community of practice, through training workshops, the website, networking and outreach. This has been achieved with limited financial resources, and no permanent paid staff, but a very large quantity of support from donors and personal time committed by the Board and other SAMEA members.

SAMEA is planning for the future in the context of a broadly positive environment. M&E has been identified as a key government priority, including the development of a government wide M&E system (GWME). Funding is being mobilised within government and donor organisations, as well as private companies. With the development of systems of accountability and democratic participation, M&E is becoming a socially acceptable and necessary process. Technology is available to enhance M&E practice and make it more accessible and usable.



Talks about SAMEA started in Cape Town at the AfREA Conference, 2004

### FIVE STRATEGIC GOALS

Five strategic goals have been set by the SAMEA Board for the period to 2010. These are intended as broad areas of work designed to achieve the vision and mission of the Association within the context described earlier. The strategic goals are:

- **Advocacy and awareness**
- **A platform for inter-action**
- **Education and Training**
- **Professional and ethical standards**
- **Building the Association**

## CONTINUOUS ADVOCACY AND AWARENESS WHICH INCLUDE

### **Advocacy and Awareness**

**Website and listserve.** The recently revamped website provides updated information and the active listserve offers information about work opportunities, conferences, workshops, and more.

**Workshops.** SAMEA has arranged workshops on M&E standards, engagement with government M&E policy documents and feedback sessions.

speaker events.

**S.A Government Links:** SAMEA has a working relationship with the Presidency, Public Service Commission and PALAMA.

**International Speakers.** SAMEA members and M&E practitioners have been invited to listen to international

**International Links:** AFrEA, IOCE, AEA, IPDET, 3ie, NONIE and others.



### **Platform for inter-action**

**Listserve:** Active listserve, Regular information sharing through online newsletter (update)

conference in 2007. See information about upcoming conference in 2009.

linked to conference as well as throughout the year. Members are afforded the opportunity to attend high quality training sessions.

**Conference:** Very successful inaugural

**Professional Development workshop:** Training

## INFORMATION SHARING AND KNOWLEDGE CREATION

### **Education and training**

**Website:** Regular advertising of programmes and courses on the website.

**Accreditation:** Partnerships with higher education institutions.

**International opportunities**

**Needs:** Identifying, evaluating and recording the needs of members through periodic surveys.

**Government training:** Direct and indirect involvement with training of government M&E personnel.



## PROMOTING HIGH STANDARDS OF PROFESSIONAL PRACTICE

**Standards:** Continuing engagement with the standards developed by the African Evaluation Association (AfrEA), Leading to the adaptation or adoption?

**Guidelines:** Making guidelines available via the website. These often come from other associations or donor agencies.

**Accreditation process:** Involving members in the accreditation process. Debating and discussing concepts such as standards, competence, and quality practice.

**M&E Journal:** SAMEA is at the forefront of exploring the setting up of a Journal for M&E that will serve

AFRICA in particular but will hopefully involve the entire international community of M&E practitioners and thinkers.



### ***Professional and ethical standards***

## AN EFFECTIVE AND EFFICIENT ORGANISATION

**Policies and procedures documents:** Most policies are in place. Others are being investigated and discussed.

**Meetings:** Board

members are stretched and require more support.

**Administrative support:** Working toward establishing a SAMEA Head Of-

office with permanent administrative support.

**Regional structures:** Interest in regional formations growing.

### ***Building the Association***

## EVALUATION CONFERENCE 2009

CONFERENCE THEME:

**“eVALUation”**

eVALUation 2009

Emperors Palace

Johannesburg

What is most valued about M&E?

Phone: 27-31-2011 470

What are the values that underpin M&E?

Fax: 27-31-2011 510

E-mail:

vernon@confcall.co.za

Whose values matter?

***Attend the SAMEA Conference in August 2009.***

**SAMEA  
BOARD  
MEMBERS.**

***It is through the commitment and dedication of the SAMEA Board members who volunteer their time, expertise and resources, that SAMEA continues to provide its members with excellent service, information and leadership.***

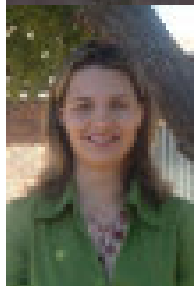
***SAMEA has also attracted membership from various countries in Africa.***



Dr Mark Abrahams  
Chairperson  
University of Cape



Mr Idran Naidoo  
Deputy-Chair  
Public Services  
Commission of S.A.



Ms Benita Van Wyk  
Treasurer  
Feedback Performance  
Metrics



Prof Fanie Cloete  
University of Johan-  
nesburg

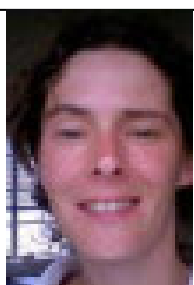


Dr Sefiso Khumalo  
Public Services Com-  
mission of S.A.



Ms Candice Morkel  
M&E Specialist E-  
Cape Government

**SAMEA BOARD MEMBERS**



Dr Marlene Roefs  
Social Dimensions



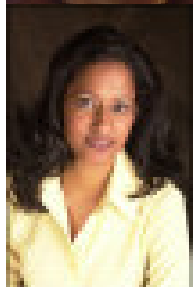
Mr David Molapo  
MK Consulting



Dr Kevin Kelly  
Centre for Aids De-  
velopment, Research  
and Evaluation  
(CADRE)



Dr Donna Podem  
Otherwise Research  
and Evaluation



Ms Christel Jacob  
CJ Development Re-  
search Consulting

